



# URBAN NATURE PLANS +

**Portfolio of capacity  
building and training tools  
and programmes for urban  
nature planning**

Sam Jelliman, Stuart Connop, Rik De Vreese,  
Gloria Osei, Caroline Nash, Ian Whitehead

Work Package: 5

Date: 30<sup>th</sup> September 2024





Action number	101060525
Financed under	HORIZON-CL6-2023-BIODIV-01-11
Action acronym	UNPplus (UNP+)
Full title	Enhanced Urban Nature Plans for Biodiversity Mainstreaming in Society
WP, Deliverable # and Title	WP5, D5.2
Version	2.0
Date	30.09.2024
Dissemination Level	Public
Coordinator of the Deliverable	UEL
Contributors	Sam Jelliman, Stuart Connop, Rik De Vreese, Gloria Osei, Caroline Nash, Ian Whitehead
Abstract	Portfolio of capacity building and training tools and programmes used in cities and through a desk study. The portfolio of identified tools and programmes has been evaluated against criteria co-defined with UNP+ project partner Lighthouse and Greening Cities The portfolio will be published on the UGP Platform.
Keywords	Urban, Greening, Planning, Training, Tools, Capacity-building

**Disclaimer:** the opinions expressed in this document are solely of the authors and do not necessarily reflect the official standpoint of the Granting authority. This deliverable is current as of the date of its release; however, its contents can change without notice. To obtain the latest edition, it is recommended contacting the primary authoring institution.



## EDITOR'S NOTE

In this document the authoring entity of UNP+ shares a portfolio of capacity building and training tools and programmes. The portfolio includes those tools and programmes that are commonly used by the project's Lighthouse and Greening Cities, and those identified through desk study, the results of an online survey of EU city capacity-building needs, and expert knowledge from project partners. The portfolio of identified tools and programmes has been evaluated against criteria co-defined with UNP+ project partner Lighthouse and Greening Cities. The portfolio will be published on the UGP Platform.

## SUGGESTED CITATION

*Jelliman S., Connop S., De Vreese R., Osei G., Nash C., Whitehead I., (2024). Portfolio of capacity building and training tools and programmes for urban nature planning (D5.2). Urban Nature Plans plus (UNP+), funded by Horizon Europe. DOI: 10.5281/zenodo.13851474*

## STATEMENT OF ORIGINALITY

This document contains original unpublished work except where clearly indicated otherwise. Acknowledgement of previously published material and of the work of others has been made through appropriate citation, quotation or both.

The Members of the UNP+ Consortium make no warranty of any kind with regard to this document, including, but not limited to, the implied warranties of merchantability and fitness for a particular purpose.

The Members of the UNP+ Consortium shall not be held liable for errors contained herein or direct, indirect, special, incidental or consequential damages in connection with the furnishing, performance, or use of this material.

Version	Issue Date	Stage Content	Changes
1.0	13th September 2024	Draft Document	Initial draft for review
2.0	30th September	Final document	Minor edits and Table formatting updates



## TABLE OF CONTENTS

<b>1. BACKGROUND .....</b>	<b>5</b>
<b>2. METHODS .....</b>	<b>6</b>
2.1. Defining the scope .....	6
2.2. Co-creating the evaluation criteria with cities.....	9
2.3. Review .....	11
2.4. Academic expert input .....	11
2.5. City experiential input .....	11
2.6. Evaluation.....	11
<b>3. PORTFOLIO SHORTLIST .....</b>	<b>12</b>
<b>4. SUMMARY .....</b>	<b>27</b>
<b>5. REFERENCES .....</b>	<b>28</b>



## Figures:

<b>Figure 1.</b> Urban Nature Plan cycle steps.....	5
---	---

## Tables:

<b>Table 1:</b> Defining ‘capacity building’, ‘training’, ‘tools’ and ‘programmes’ based on provider definitions. ....	6
<b>Table 2:</b> Defining ‘capacity building’, ‘training’, ‘tools’ and ‘programmes’ based on AI interpretation (Chat GPT).....	7
<b>Table 3:</b> Defining ‘capacity building’, ‘training’, ‘tools’ and ‘programmes’ based on academia	9



# I. Background

As part of the EU Biodiversity Strategy for 2030, the European Commission encourages EU towns and cities of at least 20,000 inhabitants to develop Urban Nature Plans (UNPs). This includes the creation of biodiverse and accessible urban forests, parks and gardens; urban farms; green roofs and walls; treelined streets; urban meadows; and urban hedges (European Commission 2021).

Aligned with the Biodiversity Strategy, the Horizon Europe UNP+ project was established to support cities to create thriving, biodiverse urban landscapes where urban ecosystems are resilient, vibrant, and integrated into urban planning, and delivering on the needs and aspirations of their inhabitants. To do this, the UNP+ project focuses on the process of developing Urban Nature Plans. The process of developing Urban Nature Plans is underpinned by [guidance](#) aimed to support local authorities in achieving this objective (Figure 1). The guidance has been developed based on a co-production process with local authorities, and associated NGOs, that had experience of developing and implementing Urban Nature Plans. It is based around a series of ten steps that are considered to be the critical stages in developing and implementing a UNP, from securing political input to adopting, publishing, and implementing the plan.

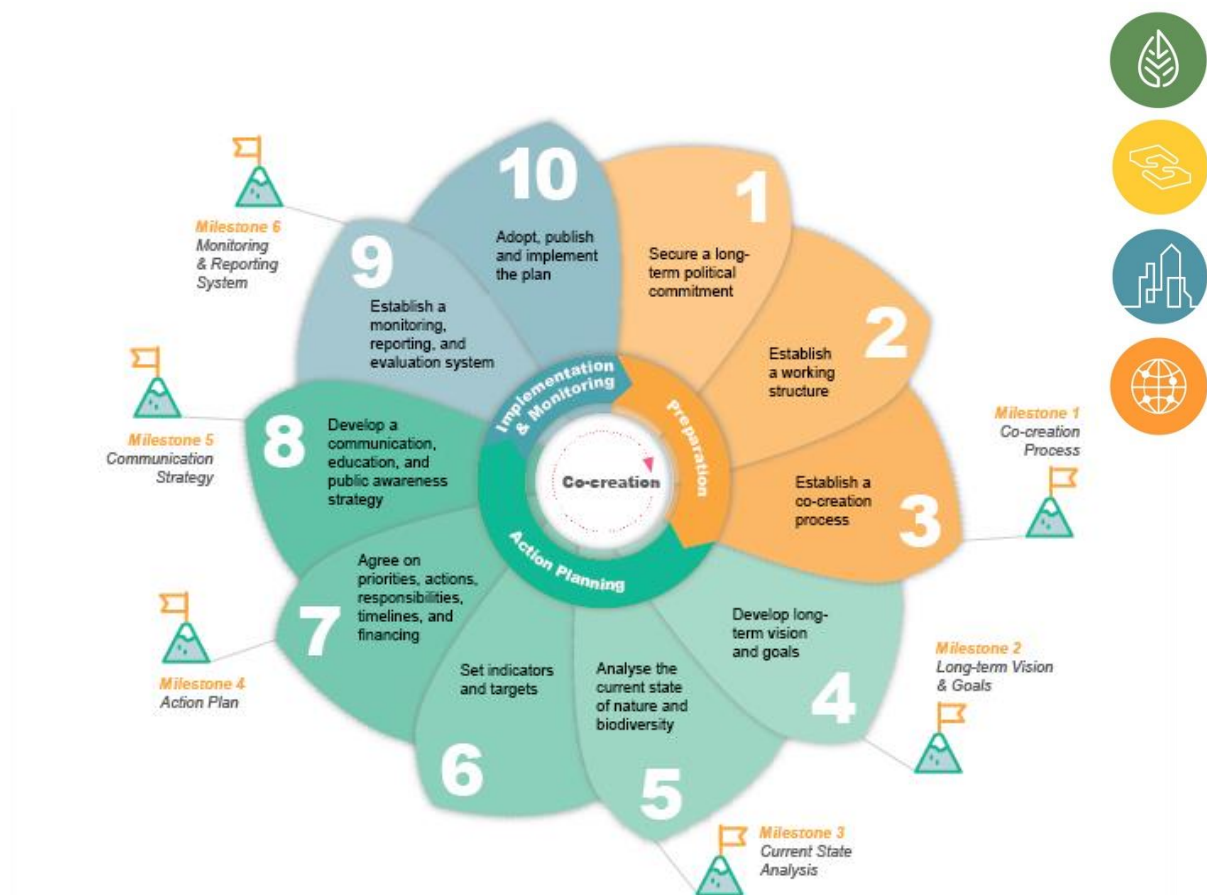


Figure 1. Urban Nature Plan cycle steps



The **UNP+ project** is partnering with a series of cities across the EU to test the [UNP framework, and to elaborate the UNP Guidance](#) package, mainly through strengthening the process to develop and implement Urban Nature Plans. UNP+ engages with the cities of Barcelona and Paris (UNP+ Lighthouse Cities), cities that are well developed in the UNP journeys, to explore their existing experiences of Urban Nature Planning. It also, engages with the cities of Mannheim, Belgrade, and Burgas (UNP+ Greening Cities), that are much earlier in their UNP journeys, in a learning-by-doing approach to navigating the Urban Nature Plan steps. Learning captured within the project from these city experiences will be used to enhance and improve the UNP guidance, knowledge sharing, and innovations for practitioners in cities, creating the next version of UNP support: UNP+.

Part of this process includes identifying the **capacity building needs of city practitioners** at each step of the UNP cycle, and developing new capacity building resources to meet these needs. Capacity-building has been identified as a key need for the mainstreaming of renaturing cities and mainstreaming Nature-based Solutions (Porzecanski et al. 2022; Adams et al. 2024; Frantzeskaki et al. 2024). Once needs are identified, the UNP+ project aims to design, develop, and implement an innovative capacity-building programme for urban and regional innovators and policymakers to align themselves to the increasing ambitions of the EU climate adaptation strategy. This Deliverable represents part of that process, a portfolio of existing capacity building and training tools and programmes that can be used by cities across the EU and beyond to support the delivery of the UNP steps.

## 2. Methods

In order to compile the UNP+ capacity building and training tools and programmes portfolio, and to evaluate the usability of these resources for city officials, a number of review steps were undertaken. These comprised:

### 2.1. Defining the scope

There was first a need to define the scope and boundaries of what is meant by *capacity building and training tools and programmes*. The terms are quite general and can be used differentially in different contexts. To reach a project consensus on this scope, we reviewed a variety of different data sources (Tables 1 – 3).

**Table 1: Defining ‘capacity building’, ‘training’, ‘tools’ and ‘programmes’ based on provider definitions.**

Purpose	
<b>Capacity building</b>	Capacity development is the process by which individuals, groups, organisations, institutions and societies increase their



	<p>abilities to: 1. perform core functions, solve problems, define and achieve objectives 2. understand and deal with their development needs in a broad context and in a sustainable manner. (<a href="#">WHO</a>)</p> <p>Capacity development is a long-term process. It can be promoted through a combination of shorter-term results that are driven from the outside and more sustainable, longer-term ones that are driven from the inside. (<a href="#">UNDP</a>)</p> <p>Capacity-building is defined as the process of developing and strengthening the skills, instincts, abilities, processes and resources that organisations and communities need to survive, adapt, and thrive in a fast-changing world. (<a href="#">UN</a>)</p> <p>Capacity development encompasses a whole range of activities designed to empower individuals and institutions, including the analysis of policy contexts, awareness building, institutional adjustments, policy research, policy immersion and more. (<a href="#">Diplo</a>).</p>
<b>Training</b>	<p>Training is narrow in a specific skill, competency, ability</p> <p>Training is just one element of capacity development. It usually focuses on providing skills for specific problems e.g. using a piece of software. (<a href="#">Diplo</a>)</p>
<b>Format</b>	
<b>Tools</b>	<p>A specific thing that does a narrow job. Anything that you use for a particular purpose. (<a href="#">Collins</a>)</p>
<b>Programmes</b>	<p>A set of related measures or activities with a particular long-term aim. ( <a href="#">Oxford Languages</a>)</p>

**Table 2: Defining ‘capacity building’, ‘training’, ‘tools’ and ‘programmes’ based on AI interpretation (Chat GPT)**

Basic summary	Training	Capacity building
<b>Tools</b>	A resource used to facilitate learning or skill development, such as textbooks, multimedia presentations, or simulations.	A resource aimed at enhancing the abilities or competencies of individuals, organizations, or communities, such as





		workshops or technical assistance resources.
<b>Programmes</b>	A structured series of activities designed to impart knowledge, develop skills, or modify attitudes among participants.	A structured initiative designed to strengthen the capacities of individuals or institutions to achieve their goals, typically involving coordinated activities or interventions.
Full description	Training	Capacity building
<b>Tools</b>	A training tool refers to any resource or instrument used to facilitate learning or skill development within a specific context. These tools can vary widely depending on the subject matter and the targeted audience. Examples of training tools include textbooks, manuals, multimedia presentations, simulations, and interactive software.	A capacity-building tool is a resource or mechanism aimed at enhancing the abilities, competencies, and capabilities of individuals, organisations, or communities to effectively address challenges and achieve their goals. These tools often focus on developing specific skills, knowledge, or resources necessary for improving performance or achieving desired outcomes in a particular area. Capacity-building tools may include workshops, mentoring programs, technical assistance resources, or networking opportunities.
<b>Programmes</b>	A training programme is a structured and organised series of activities designed to impart knowledge, develop skills, or modify attitudes among participants. These programmes typically have predefined learning objectives, curriculum outlines, instructional methods, and evaluation criteria. Training programmes can be implemented in various settings such as workplaces, educational	A capacity-building programme is a structured initiative designed to systematically strengthen the capacities of individuals, groups, or institutions to better fulfil their missions or functions. These programmes typically involve a series of coordinated activities, interventions, or interventions aimed at improving skills, knowledge, processes, or infrastructure. Capacity-building programmes may target various sectors such as



	institutions, or community centres.	healthcare, education, governance, or economic development.
--	-------------------------------------	---

**Table 3: Defining ‘capacity building’, ‘training’, ‘tools’ and ‘programmes’ based on academic review**

Purpose	
<b>Capacity building</b>	Capacity building refers to a broad palette of techniques and methods that help individuals, organizations, and communities develop solutions to address the obstacles which prevent them in reaching their development goals (Junjan, 2020).
<b>Training</b>	Teaching or developing oneself or others in knowledge, skills, or attitudes needed to improve one’s capability (Kopp, 2018)
Format	
<b>Tools</b>	No specific definition found in peer-reviewed scientific literature
<b>Programmes</b>	No specific definition found in peer-reviewed scientific literature

These varied data sources were brought together to generate the following definitions:

**Training tool** - A resource used to facilitate learning or skill development, such as textbooks, multimedia presentations, or simulations.

**Capacity building tool** - A resource aimed at enhancing the abilities or competencies of individuals, organizations, or communities, such as workshops or technical assistance resources.

**Training programme** - A structured series of activities designed to impart knowledge, develop skills, or modify attitudes among participants.

**Capacity building programme** - A structured initiative designed to strengthen the capacities of individuals or institutions to achieve their goals, typically involving coordinated activities or interventions.

## 2.2. Co-creating the evaluation criteria with cities

Following the defining of the scope of the concept of ‘capacity building and training tools and programmes’, an online survey was developed in WP5 to explore previous city experiences



with capacity building and training tools and programmes (Whitehead et al. 2024). A social media campaign and snowballing methodology were used to encourage city officials from across Europe to engage in the survey. The survey contained specific questions on what capacity building and training tools and programmes they have engaged with, and their experience of them. This included:

- What existing capacity building tools and programmes do you use related to the development and enhancement of nature in the urban environment?
- Think about the 10 steps of the UNP cycle. Which of the 10 steps have you been supported in through capacity building tools or programmes?
- For which steps should the UNP+ project develop specific tools and programming for?
- What makes the capacity building tools and programmes you use successful?
- What training formats do you most prefer based upon previous experience?
- Which departments/sections of your organisation do you think would derive the greatest benefits from training?
- Which forms of accreditation would be beneficial?

The survey received 45 responses (as of 04/09/2024). This included completion by our UNP+ Greening and Lighthouse Cities. The responses by all responding cities to the questions *‘What makes the capacity building tools and programmes you use successful?’* and *‘What training formats do you most prefer based upon previous experience?’* were used to co-develop a series of evaluation criteria to explore the potential value of existing capacity building and training tools and programmes. The respondents could rank the order of importance of several factors, and these were used to shortlist a series of evaluation criteria for the usability of the portfolio resources.

These criteria were:

- Availability in local languages
- Usability (a combination of how easy the guidelines are to follow, are the points clear, and it is a non-technical product)
- How engaging is it (based on a combination of whether the information is presented by independent and enthusiastic experts, and if the learning is stimulating and fun)
- Availability of support (e.g. telephone, bot chat, training video, regular webinars, email)
- Accreditation (whether professional development/accreditation is available)
- Complementarity (whether the tool/programme acknowledges and/or builds upon other complementary resources/initiatives)
- Uniqueness
- Locally relevant

(Explanation of how these shortlisted criteria were used to evaluate the capacity building and training tools and programmes is provided in section 2.6).



## 2.3. Review

A scoping review of capacity building and training tools and programmes available for cities to engage with to support the ten steps of the UGP process was carried out. This review included a focus on online NbS platforms, and interrogated other online and in-person resources. It also included a focus on both academic and grey literature to find useful tools, guidance and programmes which could be used to support the UNP process. A starting point for the review was the Oppla repository. It was used as it is the primary repository for guidance documents related to urban greening and Nature-based Solutions (NbS) in Europe. A search was used to identify relevant documents within the Oppla repository.

## 2.4. Academic expert input

Following the scoping review, other UNP+ WP5 project partners with responsibility for developing and delivering the UNP+ capacity-building programme were invited to add additional resources that they were familiar with. This included partners from ICLEI, UH, EFI, TECN, HNUA, UEL, POLIMI, TCD, and iDiv/UFZ, and included tools from ICLEI's draft UNP toolkit.

## 2.5. City experiential input

Finally, in order to complete the list of capacity building and training tools and programmes, any tools and programmes listed by cities in either the UNP+ self-assessment surveys (UNP+ project cities), or the capacity-building online surveys (all participating cities) were added to the portfolio list.

In total, at the time of writing this document, 126 capacity building tools, guidance documents, programmes and platforms had been added to the complete portfolio.

## 2.6. Evaluation

Following the finalisation of the portfolio list, all items on the list were evaluated against the evaluation criteria co-created in review step 2.2. This was done to make the portfolio more user-friendly for any cities trying to look for UNP support, by producing a shortlist comprising a limited number of capacity building tools, guidance documents, programmes and platforms which could be recommended.

The criteria co-defined by the cities as being of most value for them when engaging with training and development tools and programmes were used to generate the shortlist. Each capacity building tool, guidance document, programme or platform was assigned a score from 1 to 3 for each of the evaluation criteria (section 2.2), with 1 being low (not good) and 3 being high (good). A total score could then be calculated for each item. The maximum possible



score for an item was 27, if it were to score 3/3 on all 9 evaluation criteria. Items which scored over 17 achieved a green score (corresponding to the most 'usable' against the usability criteria), between 10 & 17 achieved a yellow score (of medium 'use' against the usability criteria), and below 10 achieved a red score (least 'usable' against the usability criteria).

In addition to the usability evaluation, each capacity building tool, guidance document, programme, and platform, was assessed to determine which of the ten UNP steps it could support city officials in addressing. A shortlist of capacity building tools, guidance documents, programmes and platforms was then produced for each of the UNP steps. Items which related to the step in question and achieved a green score of greater than 17 were added to the shortlist for each step.

### 3. Portfolio shortlist

The shortlist of the capacity building and training tools and programmes recommended for use in cities is presented below.

Step 1 – Secure a long-term political commitment: Securing the commitment and support of political leaders to secure the initiative's backing and resources.				
Category of tool/ programme	Subcategory of tool/ programme	Name	Description of tool/ programme	Justification for inclusion in Step
Guidance		<a href="#">Financing and Business Models Guidebook</a>	Guidebook on financing NbS by Connecting Nature project	Provides evidence for securing the initiative's backing and resources.
		<a href="#">Connecting Nature Framework Guidebook</a>	Holistic guidance about planning, delivery & legacy of NbS	Supports the networking of formal and informal governance and provides evidence for securing the initiative's backing and resources.
		<a href="#">Urban Greening Plan guidance</a>	Urban Greening Plan guidance produced by ICLEI	Supports interdepartmental collaboration to help secure commitment and support.
Tool	Data collection / processing	-	-	-
	Engagement	-	-	-
	Evaluation	-	-	-
Programme	Training Programme	<a href="#">UrbanByNature</a>	Supports cities in adopting Nature-based Solutions (NbS)	Assists knowledge sharing and networking to secure commitment and support of political leaders and the initiative's backing and resources.
	Podcast	<a href="#">REGREEN podcast</a>	Podcast exploring how NbS can help accelerate transition towards equitable, green, and healthy cities.	Provides knowledge from experts to inform, helping to secure commitment and support of political leaders and the initiative's backing and resources.
Platform		<a href="#">Cities with Nature</a>	Platform that connects cities and local governments to collectively enhance urban sustainability.	Provides knowledge sharing to secure commitment and support of political leaders and the initiative's backing and resources.
		<a href="#">Coursera</a>	Well known MOOC platform. Academic learning	Learning can inform decision makers and continue knowledge sharing to secure the initiative's backing and resources.



	<a href="#">Linkedin Learning</a>	Well known MOOC platform. Professional skills learning.	Learning can inform decision makers and continue knowledge sharing to secure the initiative's backing and resources.
	<a href="#">Youtube</a>	Video sharing platform.	Content from media or individuals can inform political leaders, securing commitment and support

Step 2 – Establish a working structure: Establishing a framework that defines roles, responsibilities and governance to manage the project effectively.				
Category of tool/ programme	Subcategory of tool/ programme	Name	Description of tool/ programme	Justification for inclusion in Step
Guidance		<a href="#">Guidelines for co-creation and co-governance of nature-based solutions</a>	EU Commission guidance document about Co-creation and governance of NbS	Provides guidelines for establishing a framework that defines roles, responsibilities and governance, through co-creation, to manage the project effectively.
		<a href="#">Green Cities Framework Handbook</a>	Guidance for developing and implementing Nature-based Solutions strategies towards water and climate resilience	Supports defining of roles and responsibilities, as well as providing governance guidelines to manage the project effectively.
		<a href="#">A practical guide to using reflexive monitoring for nature-based solutions</a>	Guidance on how to use Reflexive Monitoring for Nature-based Solutions by Connecting Nature project	Highlights importance of defining roles to manage a project.
		<a href="#">Reflexive Monitoring Guidebook</a>	Guidance on how to use Reflexive Monitoring for Nature-based Solutions by Connecting Nature project	Highlights importance of defining roles to manage a project.
		<a href="#">A practical guide to using co-production for nature-based solutions</a>	Guidance on how to use Co-production for NbS	Highlights importance of defining roles and encourages shared responsibility to manage a project. Also presents guideline on governance.



		<a href="#">Connecting Nature Framework Guidebook</a>	Holistic guidance about planning, delivery & legacy of NbS	Highlights need for shared roles and responsibility. Alos presents guideline on project governance.
		<a href="#">NBS Technical Solutions Guidebook</a>	Technical guidance on effective NbS	Signposts importance of governance strategy.
		<a href="#">BIOBLITZ TOOLKIT</a>	Designed to help users develop and run citizen science biodiversity monitoring.	Signposts importance of defining roles before beginning project.
		<a href="#">Urban Greening Plan guidance</a>	Urban Greening Plan guidance produced by ICLEI	Encourages user to build a framework that defines roles, responsibilities and governance to manage the project effectively.
		<a href="#">Evaluating the impact of nature-based solutions</a>	Intended to serve as a guide to the development and implementation of scientifically valid monitoring and evaluation plans for NbS impacts	The report sets a framework that defines roles, responsibilities and governance to manage the project effectively, and includes these in the case study examples that are presented.
Tool	Data collection / processing Data collection / processing	<a href="#">Urban GreenUP 'NBS Selection Tool' (tool)</a>	Decision support tool that provides recommendations to assist in choosing the most suitable NbS scheme.	Supports the management of governance to manage the project effectively.
	Engagement	<a href="#">Miro</a>	Online collaborative whiteboard platform designed to facilitate project management through visualisation.	Facilitates users in establishing a framework that incorporates collaborative roles, to manage a project.
		<a href="#">IdeaScale</a>	Cloud-based platform designed to help organisations gather, evaluate, and implement ideas from stakeholders.	Facilitates users in establishing a framework that incorporates collaborative roles, to manage a project.
	Evaluation	-	-	-
Programme	Training Programme	<a href="#">Urban Nature: Connecting Cities, Sustainability and Innovation</a>	A five-module course that is part of the Sustainable Cities and Communities Specialization offered by Lund.	Trains users on establishing a governance structure to manage the project effectively.





	Podcast	<a href="#">Creating Green Cities podcast</a>	Podcast on urban Nature-based Solutions, explained through stories of innovators from across Europe.	Informs on governance management for project efficiency.
Platform		<a href="#">Cities with Nature</a>	Platform that connects cities and local governments to collectively enhance urban sustainability.	Knowledge sharing that assists in defining roles, responsibilities and governance to manage the project effectively.

### Step 3 – Establish a co-creation process: Engaging stakeholders, including community members, experts and organisations, to develop the plan together.

Category of tool/ programme	Subcategory of tool/ programme	Name	Description of tool/ programme	Justification for inclusion in Step
Guidance		<a href="#">Guidelines for co-creation and co-governance of nature-based solutions</a>	EU Commission guidance document about Co-creation and governance of NbS	Guides the process of engaging with multiple stakeholders to develop the plan together.
		<a href="#">Leaving no one behind: NetworkNature Knowledge Brief 3 Towards inclusive nature-based solutions</a>	Guidance on include NbS by Network Nature	Highlights the importance of engaging with multiple stakeholders over the short and long-term period.
		<a href="#">Green Cities Framework Handbook</a>	Guidance for developing and implementing Nature-based Solutions strategies towards water and climate resilience	Module 1.03 provides a guide on how to “Make your stakeholder and citizen engagement plan”.
		<a href="#">Reflexive Monitoring Guidebook</a>	Guidance on how to use Reflexive Monitoring for Nature-based Solutions by Connecting Nature project	The guide encourages the involvement of experts by engaging with (knowledge) experts and organisations in a novel way including for the purpose of reflexive monitoring.
		<a href="#">A practical guide to using co-production for nature-based solutions</a>	Guidance on how to use Co-production for NbS	The guide is centred around the need to engage with a wide network of stakeholders to develop a plan together.
		<a href="#">Connecting Nature Framework Guidebook</a>	Holistic guidance about planning, delivery & legacy of NbS	Communities are considered as key stakeholders, and their engagement



				pivotal to following this guidebook. Other stakeholders such as experts and organisations, are also highlighted as important.
		<a href="#">NBS Technical Solutions Guidebook</a>	Technical guidance on effective NbS	Guide indicates the need to engage various stakeholders to customise solutions in developing the plan together.
		<a href="#">Urban Greening Plan guidance</a>	Urban Greening Plan guidance produced by ICLEI	Has references to necessity of engaging stakeholders.
		<a href="#">Evaluating the impact of nature-based solutions</a>	Intended to serve as a guide to the development and implementation of scientifically valid monitoring and evaluation plans for NbS impacts	Promotes engagement with various stakeholders, including via active participation of stakeholders through co-design and assessment done by stakeholders and end-users.
Tool	Data collection / processing Data collection / processing <b>and</b> Engagement	<a href="https://www.inaturalist.org/">https://www.inaturalist.org/</a>	Citizen science platform that allows people to share and learn about biodiversity by recording observations of living organisms	Provides a list of active individual stakeholders and a variety of projects, journal posts, and forums.
		<a href="#">PlantNet</a>	For identifying plants through photographs. It's a collaborative citizen science project that helps users identify and learn about plant species by using image recognition technology.	Can be used to engage a diverse consortium of stakeholders, including community members, experts and organisations.
		<a href="#">ebird</a>	A citizen science project and online database for recording and sharing bird observations	Can be used to engage a diverse consortium of stakeholders, including community members, experts and organisations.
		<a href="#">BeeWalk</a>	UK citizen science initiative designed to monitor and record bee populations (BeeWalk manual)	System can be used to engage a diverse consortium of stakeholders, including community members, experts and organisations.
		<a href="#">iSpot</a>	Allows users to share and learn about biodiversity by recording and identifying species. It is a citizen science project that	Can be used to engage a diverse consortium of stakeholders, including



			provides a space for enthusiasts and researchers to contribute observations and collaborate on species identification.	community members, experts and organisations.
		<a href="#">Merlin</a>	Designed to help users identify bird species through various tools and resources. It aims to make bird identification accessible and enjoyable for birdwatchers of all experience levels.	Can be used to engage a diverse consortium of stakeholders, including community members, experts and organisations.
	Engagement			
		<a href="#">Streetmix</a>	Designed for urban planning and street design, allowing users to interactively create and visualise street layouts and public spaces.	The system is aimed at helping city planners, community members, and activists conceptualise and propose changes to street design in a user-friendly manner, and therefore can be used to engage a diverse consortium of stakeholders, including community members, experts and organisations, to develop the plan together.
		<a href="#">Commonplace</a>	Designed to facilitate urban planning, community engagement, and public consultation.	Assists in engaging stakeholders, including community members, experts and organisations, to develop the plan together through gathering feedback from residents and stakeholders on various urban projects and planning initiatives.
		<a href="#">EngagementHQ</a>	Designed to facilitate community engagement and public consultation.	Fosters engagement with stakeholders, by gathering feedback from the public, managing consultations, and analysing community input, to develop the plan together.
	Evaluation	-	-	-
Programme	Training Programme	<a href="#">Urban Nature: Connecting Cities, Sustainability and Innovation</a>	A five-module course that is part of the Sustainable Cities and Communities Specialization offered by Lund.	The governance module is presented through examples and the role of collaboration and engaging citizens and communities is highlighted.



		<a href="#">RWTHx: Nature-based Urban Regeneration</a>	Nature-based Urban Regeneration is an online MOOC course offered by RWTH Aachen University through edX, a platform for MOOCs	The programme course shares knowledge generated in urban Living Labs in Europe and China and will introduce you to co-designing, co-implementing and evaluating Nature-based Solutions for urban renewal with local communities.
	Podcast	<a href="#">Creating Green Cities podcast</a>	Podcast on urban Nature-based Solutions, explained through stories of innovators from across Europe.	Informs on engaging stakeholders, including community members, experts and organisations, to develop the plan together.
Platform		<a href="#">Cities with Nature</a>	Platform that connects cities and local governments to collectively enhance urban sustainability.	Platform focuses on the engagement of multiple stakeholders.

Step 4 – Develop long-term vision and goals: Creating a comprehensive vision and setting clear, achievable goals for the future state of urban nature and biodiversity.				
Category of tool/programme	Subcategory of tool/programme	Name	Description of tool/programme	Justification for inclusion in Step
Guidance		<a href="#">Guidelines for co-creation and co-governance of nature-based solutions</a>	EU Commission guidance document about Co-creation and governance of NbS	Assists in formulating visions, priorities and interests and setting goals for the state of urban nature and biodiversity.
		<a href="#">Green Cities Framework Handbook</a>	Guidance for developing and implementing Nature-based Solutions strategies towards water and climate resilience	In the Setting Up Your Process section of the document 01: Define a vision for your NbS strategy indicates the importance of creating a comprehensive shared vision, that will inform future policy, strategy and financing of urban nature and biodiversity.
		<a href="#">Reflexive Monitoring Guidebook</a>	Guidance on how to use Reflexive Monitoring for Nature-based Solutions by Connecting Nature project	Step I of how to do reflexive monitoring is “Rethink goals: what do you need to learn about implementing Nature-based Solutions”, whilst recording important events and



			analysing critical turning points includes the tracing of goals for present past, and future reference.
<a href="#">A practical guide to using co-production for nature-based solutions</a>	Guidance on how to use Co-production for NbS		Creating comprehensive collective visions and goals for the future state of urban nature and biodiversity is key to the co-production process suggested in this document.
<a href="#">Connecting Nature Framework Guidebook</a>	Holistic guidance about planning, delivery & legacy of NbS		The governance section of this guide features the use of clear shared visions and achievable goals for nature and biodiversity.
<a href="#">NBS Technical Solutions Guidebook</a>	Technical guidance on effective NbS		Has some mention of setting goals and adapting to future changes or challenges of the Nature-based Solutions.
<a href="#">Seizing opportunities for ecosystem restoration to tackle societal challenges</a>	Factsheet on using NbS for social benefit by Network Nature		Mentions requirement to create and recognise socio-economic goals for the enhancing nature.
<a href="#">IUCN Global Standard for Nature-based Solutions: A user-friendly framework for the verification, design and scaling up of NBS</a>	Framework for the verification, design and scaling up of NbS by IUCN		Some description of creating a shared vision and criterion 6: details the process for NbS to equitably balance trade-offs between achievement of their primary goal(s) and the continued provision of multiple benefits.
<a href="#">Principles for delivering urban Nature-based Solutions</a>	Principles to assist organisations and individuals in the design, delivery, and operation of urban NbS		Indication of need for users to create vision and set goals, with particular attention to the future state of urban nature and biodiversity.
<a href="#">Shifting the water paradigm: managing water through nature</a>	Explores common water-related challenges, while proposing Nature-based Solutions as a paradigm shift.		The benefits that came out of the presented case studies have been sectioned into achieving environmental, social, and economic goals of urban nature and biodiversity.



		<a href="#">Financing and business models guidebook</a>	Guidebook on financing NbS by Connecting Nature project	Describes the creation of city visions and common visions for the state of urban nature and biodiversity.
		<a href="#">Urban Greening for Biodiversity Net Gain: A Design Guide</a>	Biodiversity Net Gain design guide + creating engaging, healthy and resilient places, and enabling the city to adapt to climate change	Guide considers the various benefits of biodiversity which could assist users in setting clear, achievable goals for the state of urban nature and biodiversity.
		<a href="#">Nature Nearby' Accessible Natural Greenspace Guidance</a>	Guidelines on how to make high quality, accessible green space	Guide advocates for users to consider shared vision to inform the process and long-term goals with specific focus on future state of urban nature and biodiversity.
		<a href="#">Urban Greening Plan guidance</a>	Urban Greening Plan guidance produced by ICLEI	Has sections on creating long-term visions and goals.
Tool	Data collection / processing	<a href="#">Tree Equity Score</a>	Tool designed to assess and promote the equitable distribution of urban tree canopy across different areas within the UK.	The map-based application helps address disparities in urban tree distribution by identifying the areas in greatest need of people-focused investment in trees. This allows for users to create a comprehensive vision and setting clear, achievable goals for the future state of urban nature and biodiversity.
	Engagement	-	-	-
	Evaluation	-	-	-
Programme	Training Programme	<a href="#">Urban Nature: Connecting Cities, Sustainability and Innovation</a>	A five-module course that is part of the Sustainable Cities and Communities Specialization offered by Lund.	Completing the modules provides users with ideas and vision for next steps for the state of urban nature and biodiversity.
		<a href="#">REGREEN podcast</a>	Podcast exploring how NbS can help accelerate transition towards equitable, green, and healthy cities.	Provides as specific podcast on Episode 3 about Nature-based Solutions and the UN Sustainable Development Goals helping users set clear, achievable goals for the future state of urban nature and biodiversity.
	Podcast	<a href="#">Creating Green Cities podcast</a>	Podcast on urban Nature-based Solutions, explained through stories of innovators from across Europe.	Some podcasts help to create a comprehensive vision and set clear, achievable goals for the future state of urban nature and biodiversity.



Platform	<a href="#">Cities with Nature</a>	Platform that connects cities and local governments to collectively enhance urban sustainability.	Collaborative work using this platform can result in the creation a shared vision and setting clear, achievable goals for urban nature and biodiversity.
	<a href="#">UN-Habitat Learn</a>	UN-Habitat Learn is a platform dedicated to providing education and training on sustainable urban development.	Course categories include Measuring Sustainable Development Goals Indicators to help users in setting clear, achievable goals for the future state of urban nature and biodiversity.

Step 5 – Analyse the current state of nature and biodiversity: Assessing and documenting the existing state of nature and biodiversity in the urban area.				
Category of tool/ programme	Subcategory of tool/ programme	Name	Description of tool/ programme	Justification for inclusion in Step
Guidance		<a href="#">Principles for delivering urban Nature-based Solutions</a>	Principles to assist organisations and individuals in the design, delivery, and operation of urban NbS	Frequent mentions of the need for assessments, including some links to relevant external tools. Also suggests documenting and disseminating the findings from monitoring and evaluating NbS interventions.
		<a href="#">Green Cities Framework Handbook</a>	Guidance for developing and implementing Nature-based Solutions strategies towards water and climate resilience	The guide presents NbS business models as a method of assessing and documenting the existing state of nature and biodiversity in the urban area.
		<a href="#">Connecting Nature Framework Guidebook</a>	Holistic guidance about planning, delivery & legacy of NbS	In sections such as Impact Assessment and Step 4: Iterative monitoring and evaluation, describe the need to assess and document existing ecosystem services, nature, and biodiversity.
		<a href="#">NBS Technical Solutions Guidebook</a>	Technical guidance on effective NbS	Signpost the use of technical and impact assessments for documenting the existing state of nature.
		<a href="#">Urban Greening Plan guidance</a>	Urban Greening Plan guidance produced by ICLEI	Includes assessing and documenting the existing state of nature and biodiversity.





Tool	Data collection / processing Data collection / processing	<a href="#">Central Scotland Green Network (CSGN) - 2021 Habitat Connectivity Map</a>	Strategic tool designed to enhance ecological connectivity across Central Scotland.	Through the tool, assessing and documenting the existing state of nature and biodiversity in the urban area is possible. It provides visualisations of habitat networks and supports planning and conservation efforts. The map helps identify and address gaps in habitat connectivity to support biodiversity and ecosystem health.
		<a href="#">Capital Asset Value for Amenity Trees</a>	Method used to assess the monetary value of amenity trees based on their contribution to the environment and public space.	Assessing and documenting the existing state of tree biodiversity in the urban area using the available spreadsheet. The documentation includes various tabs for recording information including photos, stem diameters, unit value factor.
		<a href="#">Condatis</a>	Decision support tool designed to pinpoint locations where habitat creation and restoration will provide the most significant benefits for existing habitat networks and enhance connectivity across landscapes.	By pinpointing the locations where habitat creation and restoration will provide the most significant benefits, this tool can be used to help with assessing and documenting the existing state of nature and biodiversity in the urban area.
		<a href="#">MAGIC</a>	An extensive online mapping platform which provides diverse geographic and environmental data, and aids in planning, environmental management, and public access to detailed spatial information.	Assessing and documenting the existing state of nature and biodiversity is made viable through over 400 datasets in the interactive maps.
		<a href="#">City Biodiversity Index</a>	A tool developed to help cities assess and improve their biodiversity management and planning.	Cities can assess and document the existing state of nature and biodiversity in the urban area can be done using the index to evaluate and monitor the progress of their biodiversity conservation efforts against their own individual baselines.
		<a href="#">Arc GIS</a>	Comprehensive geographic information system. Used for	Can assist users in assessing and documenting the existing state of nature and biodiversity in the urban area on a spatial level.





			creating, analysing, and managing spatial and geographic data.	
		<a href="#">Copernicus land monitoring service</a>	Offers geographical data on land cover and its changes. This information is available to a wide range of users, serving various environmental and terrestrial applications.	Tool can aid in the assessing and documenting the existing state of nature and biodiversity in the urban area, including land use, vegetation conditions, the water cycle, and Earth's surface energy variables.
		<a href="#">Google Environmental Insights Explorer</a>	A tool developed by Google to help cities and organizations understand and manage their environmental impact.	Can be used in assessing and documenting the existing state of nature and biodiversity in the urban area.
		<a href="#">openforis - Collect Earth</a>	A tool that allows users to gather data using Google Earth. It works alongside Google Earth, Bing Maps, and Google Earth Engine to analyse high-resolution satellite imagery for various applications.	Decision makers can use the tool to detect deforestation, forest degradation, and other changes in the landscape. The data empowers authorities and organisations to implement policies to protect the landscape, mitigate climate change, and promote sustainable livelihoods, hence, assessing and documenting the existing state of nature and biodiversity in an urban area is possible.
	Data collection / processing Data collection / processing <b>and</b> Engagement	<a href="https://www.inaturalist.org/">https://www.inaturalist.org/</a>	Citizen science platform that allows people to share and learn about biodiversity by recording observations of living organisms	Recording of observations of living organisms allows other users access to assessments and documentations of the existing state of nature and biodiversity in the urban area.
		<a href="#">PlantNet</a>	For identifying plants through photographs. It's a collaborative citizen science project that helps users identify and learn about plant species by using image recognition technology.	Allows for the direct assessing and documenting of the existing state of plants in the area.
		<a href="#">ebird</a>	A citizen science project and online database for recording and sharing bird observations	Allows for the direct assessing and documenting of the existing state of birds in the area.



		<a href="#">BeeWalk</a>	UK citizen science initiative designed to monitor and record bee populations (BeeWalk manual)	Allows for the direct assessing and documenting of the existing state of bumblebees in the area.
		<a href="#">iSpot</a>	Allows users to share and learn about biodiversity by recording and identifying species. It is a citizen science project that provides a space for enthusiasts and researchers to contribute observations and collaborate on species identification.	Allows for the direct assessing and documenting of the existing state of wildlife species in the area.
		<a href="#">Merlin</a>	Designed to help users identify bird species through various tools and resources. It aims to make bird identification accessible and enjoyable for birdwatchers of all experience levels.	Allows for the direct assessing and documenting of the existing state of bird species in the area.
	Evaluation	-	-	-
Programme	Training Programme	<a href="#">Getting started with GIS</a>	Provides fundamental concepts that underlie the use of a GIS with hands-on experience with maps and geographic data. This course uses ArcMap.	Can be used for assessing and documenting the existing state of nature and biodiversity in the urban area by creating a GIS map, evaluating data for use in a GIS mapping project, visually analysing feature relationships and patterns on a GIS map, and sharing GIS maps and analysis results.
	Podcast	-	-	-
Platform		<a href="#">Cities with Nature</a>	Platform that connects cities and local governments to collectively enhance urban sustainability.	Filed “Updates” on the platform may help with documenting the existing state of nature and biodiversity in the urban area.



Step 6 – Set indicators and targets: Identify specific metrics to measure progress and set target outcomes to achieve the Plan's objectives.				
Category of tool/ programme	Subcategory of tool/ programme	Name	Description of tool/ programme	Justification for inclusion in Step
Guidance		<a href="#">Principles for delivering urban Nature-based Solutions</a>	Principles to assist organisations and individuals in the design, delivery, and operation of urban NbS	Specifically identifies relevant metrics for measuring progress and indicates that measuring the outputs of target assists in achieving objectives.
		<a href="#">Green Cities Framework Handbook</a>	Guidance for developing and implementing Nature-based Solutions strategies towards water and climate resilience	One of guiding principles is “defining clear, achievable, and measurable targets and objectives and implementation pathway”. Further, it provides case study representation and links to tools for measuring the Plan's objectives.
		<a href="#">Connecting Nature Framework Guidebook</a>	Holistic guidance about planning, delivery & legacy of NbS	The guide indicates the need to measure progress, particularly in Step 4: Plan what, when and how to measure.
		<a href="#">CLEVER Regional Solutions Catalogue</a>	Showcase of good practice NbS interventions and enablers from China, Europe and Latin America	Various mentions of need to measure progress when achieving objectives.
		<a href="#">Impact Assessment Guidebook</a>	For developing robust monitoring and evaluation plans for Nature-based Solutions	Various mentions of need to measure progress, including measuring different types of indicators, when achieving objectives.
		<a href="#">NBS Technical Solutions Guidebook</a>	Technical guidance on effective NbS	Signposts the users in the need for specific metrics to measure progress such as investment measures.
		<a href="#">Urban Greening for Biodiversity Net Gain: A Design Guide</a>	Biodiversity Net Gain design guide for creating engaging, healthy and resilient places, and enabling the city to adapt to climate change	The guide specifically identifies the Urban Greening Factor (UGF) as a tool to measure particular set targets.
		<a href="#">Urban Greening Plan guidance</a>	Urban Greening Plan guidance produced by ICLEI	Points to specified measuring progresses and set targets being a requirement for successful plans.



		<a href="#">Evaluating the impact of nature-based solutions</a>	Intended to serve as a guide to the development and implementation of scientifically valid monitoring and evaluation plans for NbS impacts	The report identifies that impacts may be measured both quantitatively and qualitatively by adopting indicators. This evaluates NbS impacts across 12 social challenge areas.
Tool	Data collection / processing	<a href="#">The Environmental Benefits from Nature Tool</a>	Designed to work alongside the Biodiversity Metric and provide developers, planners and other interested parties with a means of enabling wider benefits for people and nature from Biodiversity Net Gain.	This is specific metrics for measuring ecosystem services progress and set target outcomes to achieve the Plan's objectives. The tool uses a habitat-based approach to provide a common and consistent means of considering the direct impact of land use change across 18 ecosystem service services.
		<a href="#">Urban Nature Navigator (tool)</a>	A suite of tools which allow you to understand what types of NbS schemes achieve certain benefits, approaches to stakeholder engagement and approaches to setting indicators and measuring impact.	Provides tools specific for the measuring of progress and set target outcomes to achieve indicator objectives.
	Engagement	-	-	-
	Evaluation	<a href="#">Co-impact tool</a>	Tool which supports the creation and evaluation of an NbS. From Connecting Nature project	The tool turns project targets into measurable 'indicators' and provides the user with a custom-made report on how to set up a baseline and measure success.
Programme	Training Programme	<a href="#">UrbanByNature</a>	Supports cities in adopting Nature-based Solutions (NbS)	Signpost the need to measure progress and set target outcomes to achieve objectives.
		<a href="#">Urban Nature: Connecting Cities, Sustainability and Innovation</a>	A five-module course that is part of the Sustainable Cities and Communities Specialization offered by Lund.	By completing the Assessment Methods module users can gain an increased knowledge and a deeper understanding of possibilities and challenges for valuing and assessing the impacts of Nature-based Solutions. Assessment and valuation methods are presented and discussed in the context of different perspectives on cities, nature and innovation.



		<a href="#">RWTHx: Nature-based Urban Regeneration</a>	Nature-based Urban Regeneration is an online MOOC course offered by RWTH Aachen University through edX, a platform for MOOCs	Signposts to identifying specific metrics to measure progress and set target outcomes to achieve the Plan's objectives.
	Podcast	-	-	-
Platform		<a href="#">Cities with Nature</a>	Platform that connects cities and local governments to collectively enhance urban sustainability.	Signposts to identifying specific metrics to measure progress and set target outcomes to achieve the Plan's objectives.

Step 7 – Agree on priorities, actions, responsibilities, timelines, and financing: Outline key priorities, necessary actions, assigned responsibilities, timelines for implementation, and sources of funding.				
Category of tool/ programme	Subcategory of tool/ programme	Name	Description of tool/ programme	Justification for inclusion in Step
Guidance		<a href="#">Guidelines for co-creation and co-governance of nature-based solutions</a>	EU Commission guidance document about Co-creation and governance of NbS	Guides user in outlining strategic priorities and need to allocate funding and resources.
		<a href="#">Financing nature-based solutions in cities: Exploring opportunities from municipal funding</a>	Guidance on Financing NbS by Network Nature	The guide stresses the need to outline key city strategic priorities, necessary actions, timelines for implementation, and the unlocking of diverse sources of funding.
		<a href="#">Seizing opportunities for ecosystem restoration to tackle societal challenges</a>	Factsheet on using NbS for social benefit by Network Nature	Concentrates on outlining necessary restoration actions and need for support and resources.
		<a href="#">IUCN Global Standard for Nature-based Solutions: A user-friendly framework for the verification, design and scaling up of NBS</a>	Framework for the verification, design and scaling up of NbS by IUCN	Guide signposts benefit of outlining key actions and responsibilities.



	<a href="#"><u>Principles for delivering urban Nature-based Solutions</u></a>	Principles to assist organisations and individuals in the design, delivery, and operation of urban NbS	Supports users in outlining key priorities, necessary actions, assigned responsibilities, and considering time-bound impacts. Clearly pointing out long-term and short-term sources of funding such as crowd funding.
	<a href="#"><u>Green Cities Framework Handbook</u></a>	Guidance for developing and implementing Nature-based Solutions strategies towards water and climate resilience	The guide considers the need to define city optimised key performance indicators to monitor qualitative and quantitative impact. As well as one of the guiding principles being “defining efficient funding, business model and delivery mechanisms”.
	<a href="#"><u>Shifting the water paradigm: managing water through nature</u></a>	Explores common water-related challenges, while proposing Nature-based Solutions as a paradigm shift.	Guide encourages the outlining of necessary actions and presented case studies show actualised timelines for selected implementations.
	<a href="#"><u>Financing and Business Models Guidebook</u></a>	Guidebook on financing NbS by Connecting Nature project	Mention of outlining responsibilities, financing over the lifetime of implementation, and various reference to need to source funding.
	<a href="#"><u>Connecting Nature Framework Guidebook</u></a>	Holistic guidance about planning, delivery & legacy of NbS	The guidebook discusses the requirement to clearly present key priorities, necessary actions, assigned responsibilities, timelines for implementation, and indicates possible areas in which to source funding.
	<a href="#"><u>Urban Greening for Biodiversity Net Gain: A Design Guide</u></a>	Biodiversity Net Gain design guide + creating engaging, healthy and resilient places, and enabling the city to adapt to climate change	Guide encourages users to outline key local biodiversity and conservation priorities.
	<a href="#"><u>Nature Nearby’ Accessible Natural Greenspace Guidance</u></a>	Guidelines on how to make high quality, accessible green space	Suggests users outline key priorities, necessary actions, and assigned responsibilities. Signposts some funding streams.
	<a href="#"><u>Cohesion for Transitions (C4T) Community of Practice</u></a>	A community-based platform that aim to make better use of EU funds for sustainability transitions	Outlines key priorities associated to funders and signposts some sources of funding.



		<a href="#">Urban Greening Plan guidance</a>	Urban Greening Plan guidance produced by ICLEI	Presents that outlining key priorities, actions, responsibilities, timelines implementation, and financing is a requirement.
Tool	Data collection / processing Data collection / processing	<a href="#">MAGIC</a>	An extensive online mapping platform which provides diverse geographic and environmental data, and aids in planning, environmental management, and public access to detailed spatial information.	By using specific mapping layers users can outline key priorities and necessary actions.
		<a href="#">openforis - Collect Earth</a>	A tool that allows users to gather data using Google Earth. It works alongside Google Earth, Bing Maps, and Google Earth Engine to analyse high-resolution satellite imagery for various applications.	Tool can help users to outline key priorities, necessary actions, and assign responsibilities.
	Engagement	<a href="#">Gieß den Kiez (Water the neighborhood)</a>	Tool to catalyse the engagement of citizens in the caring of street trees by encouraging citizens to adopt street trees. Focused on Berlin.	Tool is focused on outlining the watering of urban greenery as a key priority, reducing the need for external sources of funding.
	Evaluation	-	-	-
Programme		<a href="#">UrbanByNature</a>	Supports cities in adopting Nature-based Solutions (NbS)	Shared knowledge is aimed at supporting users in being able to outline key priorities, necessary actions, assigned responsibilities, timelines for implementation, and sources of funding.
		<a href="#">Urban Nature: Connecting Cities, Sustainability and Innovation</a>	A five-module course that is part of the Sustainable Cities and Communities Specialization offered by Lund.	The business model module increases knowledge and a deeper understanding of enabling finance and developing business models for Nature-based Solutions. The importance of business models and role of financing is investigated and illustrated through examples and experiences with Nature-based Solutions.
	Training Programme	<a href="#">RWTHx: Nature-based Urban Regeneration</a>	Nature-based Urban Regeneration is an online MOOC course offered by	Programme encourages users to learn how to set up your own nature-based regeneration





			RWTH Aachen University through edX, a platform for MOOCs	strategy, including outlining key priorities and necessary actions.
		<a href="#">Getting started with GIS</a>	Provides fundamental concepts that underlie the use of a GIS with hands-on experience with maps and geographic data. This course uses ArcMap.	Mapping can help outline key priorities, necessary actions, and assigning responsibilities.
	Podcast	<a href="#">Creating Green Cities podcast</a>	Podcast on urban Nature-based Solutions, explained through stories of innovators from across Europe.	Some podcasts can help users to outline key priorities, necessary actions and assign responsibilities.
Platform		<a href="#">Cities with Nature</a>	Platform that connects cities and local governments to collectively enhance urban sustainability.	Shared knowledge can help outline key priorities, necessary actions, assigned responsibilities, timelines for implementation, and sources of funding.
		<a href="#">UN-Habitat Learn</a>	UN-Habitat Learn is a platform dedicated to providing education and training on sustainable urban development.	Information provided helps outline management strategies and action plans based on data.

Step 8 – Develop a communication, education, and public awareness strategy: Develop strategies to inform, educate and engage the public and stakeholders about the plan and its benefits.				
Category of tool/ programme	Subcategory of tool/ programme	Name	Description of tool/ programme	Justification for inclusion in Step
Guidance		<a href="#">Guidelines for co-creation and co-governance of nature-based solutions</a>	EU Commission guidance document about Co-creation and governance of NbS	Indicates education, academia, and researchers as key stakeholders. As well as disseminating actualised benefits through continuous engagement, including the public.
		<a href="#">Leaving no one behind: NetworkNature Knowledge Brief 3 Towards inclusive nature-based solutions</a>	Guidance on include NbS by Network Nature	Provides a case study that highlights the benefits of engaging and educating the public on NbS project outcomes.





		<a href="#">Principles for delivering urban Nature-based Solutions</a>	Principles to assist organisations and individuals in the design, delivery, and operation of urban NbS	Principle 6: Collaborate, educate, and innovate, specifically details strategies to inform, educate and engage with stakeholders.
		<a href="#">Green Cities Framework Handbook</a>	Guidance for developing and implementing Nature-based Solutions strategies towards water and climate resilience	One of the tips for evaluation and reporting is to “Develop a communication, education, and public awareness strategy”. The guide also provides some links for external resources on informing, educating and engaging stakeholders.
		<a href="#">Connecting Nature Framework Guidebook</a>	Holistic guidance about planning, delivery & legacy of NbS	As well as presenting the multiple benefits of nature, and the need to engage stakeholders on the project specific benefits, the guide also signposts that education is a social value benefit that can be achieved.
		<a href="#">BIOBLITZ TOOLKIT</a>	Designed to help users develop and run citizen science biodiversity monitoring.	Promotes the developing strategies to increase awareness and education of the public and stakeholders about the plan and its benefits. And the guided provides additional links to educational resources.
		<a href="#">Urban Greening Plan guidance</a>	Urban Greening Plan guidance produced by ICLEI	Highlights need to develop strategies to inform, educate and engage stakeholders about the plan and its benefits.
Tool	Data collection / processing Data collection / processing <b>and</b> Engagement	<a href="https://www.inaturalist.org/">https://www.inaturalist.org/</a>	Citizen science platform that allows people to share and learn about biodiversity by recording observations of living organisms	Includes information and resources for partaking in citizen science to allow users to develop strategies for informing, educating and engaging the public about the benefits.
		<a href="#">PlantNet</a>	For identifying plants through photographs. It's a collaborative citizen science project that helps users identify and learn about plant species by using image recognition technology.	System allows users to be informed and educated, and the public can engage actively.
		<a href="#">ebird</a>	A citizen science project and online database for recording and sharing bird observations	System allows users to be informed and educated, and the public can engage actively.



		<a href="#">BeeWalk</a>	UK citizen science initiative designed to monitor and record bee populations (BeeWalk manual)	System allows users to be informed and educated on abundance/decline of bumble bees, and the public can engage actively with basic knowledge of identification.
		<a href="#">iSpot</a>	Allows users to share and learn about biodiversity by recording and identifying species. It is a citizen science project that provides a space for enthusiasts and researchers to contribute observations and collaborate on species identification.	System allows users to be informed and educated on wildlife, and the public can engage actively. There is also articles, news, and projects on the system for further information.
		<a href="#">Merlin</a>	Designed to help users identify bird species through various tools and resources. It aims to make bird identification accessible and enjoyable for birdwatchers of all experience levels.	System allows users to be informed and educated on birds, and the public can engage actively. There are also various modes including through photographing, or recording bird call or songs, to gain further information.
	Engagement	<a href="#">Gieß den Kiez (Water the neighborhood)</a>	Tool to catalyse the engagement of citizens in the caring of street trees by encouraging citizens to adopt street trees. Focused on Berlin.	Tool may be used for strategies to inform, educate and engage the public and stakeholders about the plan and its benefits, by enabling coordinated citizen participation in the watering of urban green spaces.
	Evaluation	-	-	-
Programme	Training Programme	<a href="#">UrbanByNature</a>	Supports cities in adopting Nature-based Solutions (NbS)	Share knowledge develops strategies to inform, educate and engage the public and stakeholders about the plan and its benefits.
	Podcast	<a href="#">REGREEN podcast</a>	Podcast exploring how NbS can help accelerate transition towards equitable, green, and healthy cities.	Provides some podcasts on developing strategies to inform, educate and engage the public and stakeholders such as Episode 6: Kids and nature learning - how young people can be involved in the greening of our cities.



		<a href="#">Creating Green Cities podcast</a>	Podcast on urban Nature-based Solutions, explained through stories of innovators from across Europe.	Information on the podcasts can assist users to develop strategies that inform, educate and engage the public and stakeholders about the plan and its benefits.
Platform		<a href="#">Cities with Nature</a>	Platform that connects cities and local governments to collectively enhance urban sustainability.	Shared knowledge can help develop strategies to inform, educate and engage the public and stakeholders about the plan and its benefits.

Step 9 – Establish a monitoring, reporting, and evaluation system: Establish a system to track progress, report on developments and evaluate the effectiveness of the actions implemented.				
Category of tool/ programme	Subcategory of tool/ programme	Name	Description of tool/ programme	Justification for inclusion in Step
Guidance		<a href="#">Connecting Nature Framework Guidebook</a>	Holistic guidance about planning, delivery & legacy of NbS	Presents reflexive monitoring as a system to track progress, report on developments and evaluate the effectiveness of the actions.
		<a href="#">NBS Technical Solutions Guidebook</a>	Technical guidance on effective NbS	Highlights the need for evaluating the effectiveness of the actions in the Monitoring and Evaluation step.
		<a href="#">LOCAL GREEN DEALS A Blueprint for Action</a>	Step-by-step guidance to support cities with the creation of Local Green Deals.	The guide indicates that establishing a system to track and report progress. And evaluate the effectiveness of the implementation of actions and governance.
		<a href="#">Urban Greening Plan guidance</a>	Urban Greening Plan guidance produced by ICLEI	Signposts the need to consider a system for tracking and monitoring progress, as well as transparent reporting and evaluation of the actions.
		<a href="#">Evaluating the impact of nature-based solutions</a>	Intended to serve as a guide to the development and implementation of scientifically valid monitoring and evaluation plans for NbS impacts	Highlights the need to establish a system for monitoring progress (particularly in association with SDGs), report on development plans and a key focus of the



				report is to evaluate the effectiveness of implemented actions.
Tool	Data collection / processing Data collection / processing	<a href="#">Tree Equity Score</a>	Tool designed to assess and promote the equitable distribution of urban tree canopy across different areas within the UK.	By finding the score for an urban neighbourhood, locating data to inform and support allocation of resources for trees, informing the Local Authority and regional strategies, and disseminating the benefits to the community, the system helps establish a system to track progress, report on developments and evaluate the effectiveness of the actions implemented.
		<a href="#">Capital Asset Value for Amenity Trees</a>	Method used to assess the monetary value of amenity trees based on their contribution to the environment and public space.	The system can be used to track progress and evaluate the effectiveness of the actions implemented by repeating the process over a period of time.
		<a href="#">Condatis</a>	Decision support tool designed to pinpoint locations where habitat creation and restoration will provide the most significant benefits for existing habitat networks and enhance connectivity across landscapes.	Provides a platform for tracking progress, reporting on developments and evaluate the effectiveness of the actions implemented to benefit existing habitat networks and enhance connectivity across landscapes.
		<a href="#">MAGIC</a>	An extensive online mapping platform which provides diverse geographic and environmental data, and aids in planning, environmental management, and public access to detailed spatial information.	By monitoring the available information on MAGIC, users can track progress, report on developments and evaluate the effectiveness of the actions implemented, pre- and post-delivery.
		<a href="#">City Biodiversity Index</a>	A tool developed to help cities assess and improve their biodiversity management and planning.	Tool can be used to establish a system for tracking progress, reporting on developments and evaluating the effectiveness of the actions implemented by promoting and enabling cities to undertake their monitoring and reporting on biodiversity and nature.



		<a href="#">Arc GIS</a>	Comprehensive geographic information system. Used for creating, analysing, and managing spatial and geographic data.	By monitoring the available information on the system as well as adding site specific information over time, the tool helps in establishing a system to track progress, report on developments and evaluate the effectiveness of the actions implemented.
		<a href="#">Copernicus land monitoring service</a>	Offers geographical data on land cover and its changes. This information is available to a wide range of users, serving various environmental and terrestrial applications.	By monitoring the available information on the system users can establish a system to track progress, report on developments and evaluate the effectiveness of the actions implemented over time.
		<a href="#">Google Environmental Insights Explorer</a>	A tool developed by Google to help cities and organizations understand and manage their environmental impact.	Can be part of a combined system to track progress, report on developments and evaluate the effectiveness of the actions implemented.
		<a href="#">openforis - Collect Earth</a>	A tool that allows users to gather data using Google Earth. It works alongside Google Earth, Bing Maps, and Google Earth Engine to analyse high-resolution satellite imagery for various applications.	Can be part of a combined system to track progress, report on developments, and evaluate the effectiveness of the actions implemented.
	Data collection / processing Data collection / processing and Engagement	<a href="https://www.inaturalist.org/">https://www.inaturalist.org/</a>	Citizen science platform that allows people to share and learn about biodiversity by recording observations of living organisms	Users can use the system to track progress, report on developments and evaluate the effectiveness of citizen science.
		<a href="#">PlantNet</a>	For identifying plants through photographs. It's a collaborative citizen science project that helps users identify and learn about plant species by using image recognition technology.	PlantNet is accessible and allows users to access information about plant species as well as adding to the dataset, therefore reporting on developments and evaluation is possible.
		<a href="#">ebird</a>	A citizen science project and online database for recording and sharing bird observations	ebird is accessible and allows users to find more birds, share their sightings, track a



				list of birds, therefore reporting on developments and evaluation is possible.
		<a href="#">BeeWalk</a>	UK citizen science initiative designed to monitor and record bee populations (BeeWalk manual)	The accessibility of the system allows users to access information about bumble bees as well as adding to the dataset, therefore reporting on developments and evaluation is possible.
		<a href="#">iSpot</a>	Allows users to share and learn about biodiversity by recording and identifying species. It is a citizen science project that provides a space for enthusiasts and researchers to contribute observations and collaborate on species identification.	The accessibility of the system allows users to access information about wildlife as well as exploring, recording, identifying, and learning, therefore reporting on developments and evaluation of relevant wildlife is possible.
		<a href="#">Merlin</a>	Designed to help users identify bird species through various tools and resources. It aims to make bird identification accessible and enjoyable for birdwatchers of all experience levels.	Designed for accessibility as the system allows users of all experience levels to access information about birds, including Bird ID Wizard: which allows for identification through answering 3 simple questions. Therefore, the system allows exploring, recording, identifying, and learning, enabling reporting on developments and evaluation of relevant birds is possible.
Programme	Evaluation	<a href="#">Co-impact tool</a>	Tool which supports the creation and evaluation of NbS. From Connecting Nature project	The tool assists users in creating a Nature-based Solutions / project evaluation and monitoring plan. Users may utilise it as a system to track progress and evaluate the effectiveness of the actions implemented.
	Training Programme	<a href="#">UrbanByNature</a>	Supports cities in adopting Nature-based Solutions (NbS)	It provides a structured approach to integrating natural elements into urban planning and development to create more sustainable and resilient cities, therefore



				establishing evaluation means for the effectiveness of the actions implemented.
		<a href="#">Urban Nature: Connecting Cities, Sustainability and Innovation</a>	A five-module course that is part of the Sustainable Cities and Communities Specialization offered by Lund.	The knowledge derived from this course can help as part of a wider strategy to establish a system to track progress, report on developments and evaluate the effectiveness of the actions implemented.
		<a href="#">RWTHx: Nature-based Urban Regeneration</a>	Nature-based Urban Regeneration is an online MOOC course offered by RWTH Aachen University through edX, a platform for MOOCs	The knowledge derived from this course can help as part of a wider strategy to establish a system to track progress, report on developments and evaluate the effectiveness of the actions implemented.
		<a href="#">Getting started with GIS</a>	Provides fundamental concepts that underlie the use of a GIS with hands-on experience with maps and geographic data. This course uses ArcMap.	The knowledge from the fundamental concepts can be used in combination with other methods to establish a system to track progress, report on developments and evaluate the effectiveness of the actions implemented.
	Podcast	<a href="#">REGREEN podcast</a>	Podcast exploring how NbS can help accelerate transition towards equitable, green, and healthy cities.	The collective knowledge provided in the podcasts may help users establish a system to track progress, report on developments and evaluate the effectiveness of the actions implemented.
Platform		<a href="#">Cities with Nature</a>	Platform that connects cities and local governments to collectively enhance urban sustainability.	Recorded networking and collaboration can help establish a system to track progress, report on developments and evaluate the effectiveness of the actions implemented.

Step 10 – Adopt, publish, and implement the plan: Finalising, publicising, and implementing the urban nature plan.				
Category of tool/ programme	Subcategory of tool/ programme	Name	Description of tool/ programme	Justification for inclusion in Step



Guidance		<a href="#">Urban Greening Plan guidance</a>	Urban Greening Plan guidance produced by ICLEI	Considers need to publish relevant outcomes for public information.
		<a href="#">Connecting Nature Framework Guidebook</a>	Holistic guidance about planning, delivery & legacy of NbS	Signposts considerations for implementing the plan.
Tool	Data collection / processing	-	-	-
	Engagement	-	-	-
	Evaluation	-	-	-
Programme	Training Programme	<a href="#">UrbanByNature</a>	Supports cities in adopting Nature-based Solutions (NbS)	Can help finalise, publish, and implement the urban nature plan.
	Podcast	-	-	-
Platform		<a href="#">Cities with Nature</a>	Platform that connects cities and local governments to collectively enhance urban sustainability.	The aim of the tool is to have an end product of finalising and implementing the urban nature plan.



The full spreadsheet comprising the complete portfolio list and results of the evaluation process, can be found here:

[https://docs.google.com/spreadsheets/d/10vWzCCbf\\_ex\\_en-5QNY7z0SiiwxsDoq/edit?usp=drive\\_link&ouid=118359916159889103447&rtpof=true&sd=true](https://docs.google.com/spreadsheets/d/10vWzCCbf_ex_en-5QNY7z0SiiwxsDoq/edit?usp=drive_link&ouid=118359916159889103447&rtpof=true&sd=true)

and is printed at the end of this document.

## 4. Summary

The shortlist produced comprises the capacity building tools, guidance documents, programmes and platforms which we recommend cities start with using to support their UNP journey.

This shortlist is being published on the UNP+ website. As the project develops, there will need to be consideration given to the most effective platform for making these capacity building and training resources available to city practitioners to enable them to be easily found and engaged with. As this concept develops, the portfolio will be embedded into it.

In parallel to the development of a platform for engagement, the efficacy of these recommended resources will be further evaluated during the UNP+ project through engagement by the city officials, and evaluation through the Reflexive Monitoring programme.

It is also intended that more tools and programmes will be added to the portfolio as they emerge from both the UNP+ project development, and from the broader EU research and development landscape. In this sense, the portfolio should be considered as a living repository which is kept up to date with recent developments.



## 5. References

Adams, C., Moglia, M. and Frantzeskaki, N. (2024) Realising transformative agendas in cities through mainstreaming urban nature-based solutions, *Urban Forestry & Urban Greening*, Volume 91, 128160. <https://doi.org/10.1016/j.ufug.2023.128160>

European Commission: Directorate-General for Environment, EU biodiversity strategy for 2030 – Bringing nature back into our lives, Publications Office of the European Union, 2021, <https://data.europa.eu/doi/10.2779/677548>

Frantzeskaki, N., Childers, D.L., Pickett, S. et al. (2024) A transformative shift in urban ecology toward a more active and relevant future for the field and for cities. *Ambio* 53, 871–889. <https://doi.org/10.1007/s13280-024-01992-y>

Junjan, V. (2020). Capacity Building. In: Farazmand, A. (eds) *Global Encyclopedia of Public Administration, Public Policy, and Governance*. Springer, Cham. [https://doi.org/10.1007/978-3-319-31816-5\\_3004-z](https://doi.org/10.1007/978-3-319-31816-5_3004-z)

Kopp, D.M. (2018) Introduction: On the Axiology of Training and Development—Is Training Value Neutral?. In: Famous and (Infamous) Workplace and Community Training. Palgrave Macmillan, New York. [https://doi.org/10.1057/978-1-137-59753-3\\_1](https://doi.org/10.1057/978-1-137-59753-3_1)

Porzecanski AL, Sterling EJ, Copsey JA, et al. (2022) A systems framework for planning and evaluating capacity development in conservation: recommendations for practitioners. *Oryx* 56(5):671-680. doi:10.1017/S003060532100154X

Whitehead I., Bragan E., De Vreese R., Jelliman S., Freutel F. (2024). European-wide surveys on skills, capacity and training needs for Urban Nature Planning (D5.1). Urban Nature Plans plus (UNPplus) Horizon Europe project. DOI: 10.5281/zenodo.13851539.



## COPYRIGHT CLAUSE

© 2024 The UNP+ Consortium, consisting of:

- POLITECNICO DI MILANO, Department of Design (POLIMI), Italy
- ICLEI EUROPASEKRETARIAT GMBH (ICLEI), Germany
- HELSINGIN YLIOPISTO (UH), Finland
- FUNDACION TECNALIA RESEARCH & INNOVATION (TECN), Spain
- LUNDS UNIVERSITET (LUND), Sweden
- EUROPEAN FOREST INSTITUTE (EFI), Finland
- HELMHOLTZ-ZENTRUM FÜR UMWELTFORSCHUNG GMBH - UFZ (iDiv/UFZ), Germany
- HORIZON NUA INNOVATION (HNUA), Ireland
- THE PROVOST, FELLOWS, FOUNDATION SCHOLARS AND THE OTHER MEMBERS OF BOARD, OF THE COLLEGE OF THE HOLY
- AND UNDIVIDED TRINITY OF QUEEN ELIZABETH NEAR DUBLIN (TCD), Ireland
- CENTRE FOR EXPERIMENTS IN URBAN STUDIES (CEUS), Serbia
- VILLE DE PARIS (PARIS), France
- GRAD BEOGRAD (BELGRADE), Serbia
- STADT MANNHEIM (MANNHEIM), Germany
- OBSHTINA BURGAS (BURGAS), Bulgaria
- BARCELONA REGIONAL AGENCIA METROPOLITANA DE DESENVOLUPAMENT URBANÍSTIC I D'INFRASTRUCTURES SA (BARCELONA), Spain
- SVERIGES LANTBRUKSUNIVERSITET (SLU), Sweden
- UNIVERSITY OF EAST LONDON (UEL), United Kingdom

This work is licensed under a Creative Commons Attribution-ShareAlike 4.0 International License, 2024. For details, see <http://creativecommons.org/licenses/by-sa/4.0/>



tecnal:a

CEUS

MANNHEIM<sup>2</sup>



PARIS



## Contact information:

**Email** | [hello@urbannatureplans.eu](mailto:hello@urbannatureplans.eu)

**Website** | [Urbannatureplans.eu](http://Urbannatureplans.eu)

**Twitter** | [UNPplus](https://twitter.com/UNPplus)

**LinkedIn** | [UNPplus EU](https://www.linkedin.com/company/unpplus-eu)



**URBAN  
NATURE  
PLANS +**



**Funded by  
the European Union**

UNPplus is funded by the European Union (Grant Agreement No. 101135386). Views and opinions expressed are however those of the author(s) only and do not necessarily reflect those of the European Union or the European Research Executive Agency (REA). Neither the European Union nor REA can be held responsible for them.

[illegible]









Step 1					
Guidance	Tool		Programme		Platform
	Data collection / processing	Engagement	Training Programme	Podcast	
<a href="#">Financing and Business Models Guidebook</a>			<a href="#">UrbanByNature</a>	<a href="#">REGREEN podcast</a>	<a href="#">Cities with Nature</a>
<a href="#">Connecting Nature Framework Guidebook</a>					<a href="#">Coursera</a>
<a href="#">Urban Greening Plan guidance</a>					<a href="#">Linking Learning Youtube</a>

Step 2					
Guidance	Tool		Programme		Platform
	Data collection / processing	Engagement	Training Programme	Podcast	
Guidelines for co-creation and co-governance of nature-based solutions	<a href="#">Urban GreenUP 'NBS Selection Tool' (tool)</a>	<a href="#">Miro</a>	<a href="#">Urban Nature: Connecting Cities</a>	<a href="#">Creating Green Cities podcast</a>	<a href="#">Cities with Nature</a>
<a href="#">Greening Cities Framework Handbook</a>		<a href="#">IdeaScale</a>			
<a href="#">A practical guide to using reflexive monitoring for nature-based solutions</a>					
<a href="#">Reflexive Monitoring Guidebook</a>					
<a href="#">A practical guide to using co-production for nature-based solutions</a>					
<a href="#">Connecting Nature Framework Guidebook</a>					
<a href="#">NBS Technical Solutions Guidebook</a>					
<a href="#">BIOBLITZ TOOLKIT</a>					
<a href="#">Urban Greening Plan guidance</a>					
<a href="#">Evaluating the impact of nature-based solutions</a>					

Step 3				
Guidance	Tool		Programme	
	Data collection / processing	Engagement	Training Programme	Podcast
<a href="#">Guidelines for co-creation and co-governance of nature-based solutions</a>	<a href="https://www.inaturalist.org/">https://www.inaturalist.org/</a>		<a href="#">Urban Nature: Connecting Cities</a>	<a href="#">Creating Green Cities podcast</a>
<a href="#">Leaving no one behind: NetworkNature Knowledge Brief 3 Towards inclusive nature-based solutions</a>	<a href="#">PlantNet</a>		<a href="#">RWTHx: Nature-based Urban Regeneration</a>	<a href="#">Cities with Nature</a>
<a href="#">Greening Cities Framework Handbook</a>	<a href="#">ebird</a>			
<a href="#">Reflexive Monitoring Guidebook</a>	<a href="#">BeeWalk</a>			
<a href="#">A practical guide to using co-production for nature-based solutions</a>	<a href="#">iSpot</a>			
<a href="#">Connecting Nature Framework Guidebook</a>	<a href="#">Merlin</a>			
<a href="#">NBS Technical Solutions Guidebook</a>		<a href="#">Streetmix</a>		
<a href="#">Urban Greening Plan guidance</a>		<a href="#">Commonplace</a>		
<a href="#">Evaluating the impact of nature-based solutions</a>		<a href="#">EngagementHQ</a>		

Step 4					
Guidance	Tool		Programme		Platform
	Data collection / processing	Engagement	Training Programme	Podcast	
<a href="#">Guidelines for co-creation and co-governance of nature-based solutions</a>	<a href="#">Tree Equity Score</a>		<a href="#">Urban Nature: Connecting Cities, Sus REGREEN podcast</a>		<a href="#">Cities with Nature</a>
<a href="#">Greening Cities Framework Handbook</a>				<a href="#">Creating Green Cities podcast</a>	<a href="#">UN-Habitat Learn</a>
<a href="#">Reflexive Monitoring Guidebook</a>					
<a href="#">A practical guide to using co-production for nature-based solutions</a>					
<a href="#">Connecting Nature Framework Guidebook</a>					
<a href="#">NBS Technical Solutions Guidebook</a>					
<a href="#">Seizing opportunities for ecosystem restoration to tackle societal challenges</a>					
<a href="#">IUCN Global Standard for Nature-based Solutions: A user-friendly framework for the verification, design and scaling up of NBS</a>					
<a href="#">Principles for delivering urban Nature-based Solutions</a>					
<a href="#">Shifting the water paradigm: managing water through nature</a>					
<a href="#">Financing and business models guidebook</a>					
<a href="#">Urban Greening for Biodiversity Net Gain: A Design Guide</a>					
<a href="#">Nature Nearby' Accessible Natural Greenspace Guidance</a>					
<a href="#">Urban Greening Plan guidance</a>					

Step 5					
Guidance	Tool		Programme		Platform
	Data collection / processing	Engagement	Training Programme	Podcast	
<a href="#">Principles for delivering urban Nature-based Solutions</a>	<a href="#">Central Scotland Green Network (CSGN) - 2021 Habitat Connectivity Map</a>		<a href="#">Getting started with GIS</a>		<a href="#">Cities with Nature</a>
<a href="#">Greening Cities Framework Handbook</a>	<a href="#">Capital Asset Value for Amenity Trees</a>				
<a href="#">Connecting Nature Framework Guidebook</a>	<a href="#">Condatis</a>				
<a href="#">NBS Technical Solutions Guidebook</a>	<a href="#">MAGIC</a>				
<a href="#">Urban Greening Plan guidance</a>	<a href="#">City Biodiversity Index</a>				
	<a href="#">Arc GIS</a>				
	<a href="#">Copernicus land monitoring service</a>				
	<a href="#">Google Environmental Insights Explorer</a>				
	<a href="#">openforis - Collect Earth</a>				
	<a href="https://www.inaturalist.org/">https://www.inaturalist.org/</a>				
	<a href="#">PlantNet</a>				
	<a href="#">ebird</a>				
	<a href="#">BeeWalk</a>				
	<a href="#">iSpot</a>				
	<a href="#">Merlin</a>				

Step 6						
Guidance	Tool			Programme		Platform
	Data collection / processing	Engagement	Evaluation	Training Programme	Podcast	
<a href="#">Principles for delivering urban Nature-based Solutions</a>	<a href="#">The Environmental Benefits from Nature Tool</a>		<a href="#">Co-impact tool</a>	<a href="#">UrbanByNature</a>		<a href="#">Cities with Nature</a>
<a href="#">Greening Cities Framework Handbook</a>	<a href="#">Urban Nature Navigator (tool)</a>			<a href="#">Urban Nature: Connecting Cities Sustainability and Innovation</a>		
<a href="#">Connecting Nature Framework Guidebook</a>				<a href="#">RWTHx: Nature-based Urban Regeneration</a>		
<a href="#">CLEVER Regional Solutions Catalogue</a>						
<a href="#">Impact Assessment Guidebook</a>						
<a href="#">NBS Technical Solutions Guidebook</a>						
<a href="#">Urban Greening for Biodiversity Net Gain: A Design Guide</a>						
<a href="#">Urban Greening Plan guidance</a>						
<a href="#">Evaluating the impact of nature-based solutions</a>						

Step 7					
Guidance	Tool		Programme		Platform
	Data collection / processing	Engagement	Training Programme	Podcast	
<a href="#">Guidelines for co-creation and co-governance of nature-based solutions</a>	<a href="#">MAGIC</a>	<a href="#">Gieß den Kiez ( Water the neighborhood)</a>	<a href="#">UrbanByNature</a>	<a href="#">Creating Green Cities podcast</a>	<a href="#">Cities with Nature</a>
<a href="#">Financing nature-based solutions in cities: Exploring opportunities from municipal funding</a>	<a href="#">openforis - Collect Earth</a>		<a href="#">Urban Nature: Connecting Cities, Sustainability and Innovation</a>		<a href="#">UN-Habitat Learn</a>
<a href="#">Seizing opportunities for ecosystem restoration to tackle societal challenges</a>			<a href="#">RWTHx: Nature-based Urban Regeneration</a>		
<a href="#">IUCN Global Standard for Nature-based Solutions: A user-friendly framework for the verification, design and scaling up of NBS</a>			<a href="#">Getting started with GIS</a>		
<a href="#">Principles for delivering urban Nature-based Solutions Greening Cities Framework Handbook</a>					
<a href="#">Shifting the water paradigm: managing water through nature</a>					
<a href="#">Principles for delivering urban Nature-based Solutions Financing and Business Models Guidebook</a>					
<a href="#">Connecting Nature Framework Guidebook</a>					
<a href="#">Urban Greening for Biodiversity Net Gain: A Design Guide</a>					
<a href="#">Nature Nearby' Accessible Natural Greenspace Guidance Cohesion for Transitions (C4T) Community of Practice</a>					
<a href="#">Urban Greening Plan guidance</a>					

Step 8					
Guidance	Tool		Programme		Platform
	Data collection / processing	Engagement	Training Programme	Podcast	
Guidelines for co-creation and co-governance of nature-based solutions		<a href="#">Gieß den Kiez (Water the neighborhood)</a>	<a href="#">UrbanByNature</a>	<a href="#">REGREEN podcast</a>	<a href="#">Cities with Nature</a>
<a href="#">Leaving no one behind: NetworkNature Knowledge Brief</a>					
<a href="#">3 Towards inclusive nature-based solutions</a>	<a href="https://www.inaturalist.org/">https://www.inaturalist.org/</a>			<a href="#">Creating Green Cities podcast</a>	
<a href="#">Principles for delivering urban Nature-based Solutions</a>	<a href="#">PlantNet</a>				
<a href="#">Greening Cities Framework Handbook</a>	<a href="#">ebird</a>				
<a href="#">Connecting Nature Framework Guidebook</a>	<a href="#">BeeWalk</a>				
<a href="#">BIOBLITZ TOOLKIT</a>	<a href="#">iSpot</a>				
<a href="#">Urban Greening Plan guidance</a>	<a href="#">Merlin</a>				



Step 9						
Guidance	Tool		Evaluation	Programme		Platform
	Data collection / processing	Engagement		Training Programme	Podcast	
<a href="#">Connecting Nature Framework Guidebook</a>	<a href="#">Tree Equity Score</a>		<a href="#">Co-impact tool</a>	<a href="#">UrbanByNature</a>	<a href="#">REGREEN podcast</a>	<a href="#">Cities with Nature</a>
<a href="#">NBS Technical Solutions Guidebook</a>	<a href="#">Capital Asset Value for Amenity Trees</a>			<a href="#">Urban Nature: Connecting Cities, Sustainability and Innovation</a>		
<a href="#">LOCAL GREEN DEALS A Blueprint for Action</a>	<a href="#">Condatis</a>			<a href="#">RWTHx: Nature-based Urban Regeneration</a>		
<a href="#">Urban Greening Plan guidance</a>	<a href="#">MAGIC</a>			<a href="#">Getting started with GIS</a>		
<a href="#">Evaluating the impact of nature-based solutions</a>	<a href="#">City Biodiversity Index</a>					
	<a href="#">Arc GIS</a>					
	<a href="#">Copernicus land monitoring service</a>					
	<a href="#">Google Environmental Insights Explorer</a>					
	<a href="#">openforis - Collect Earth</a>					
	<a href="https://www.inaturalist.org/">https://www.inaturalist.org/</a>					
	<a href="#">PlantNet</a>					
	<a href="#">ebird</a>					
	<a href="#">BeeWalk</a>					
	<a href="#">iSpot</a>					
	<a href="#">Merlin</a>					

Step 10					
Guidance	Tool		Programme		Platform
	Data collection / processing	Engagement	Training Programme	Podcast	
<a href="#">Urban Greening Plan guidance</a>			<a href="#">UrbanByNature</a>		<a href="#">Cities with Nature</a>
<a href="#">Connecting Nature Framework Guidebook</a>					